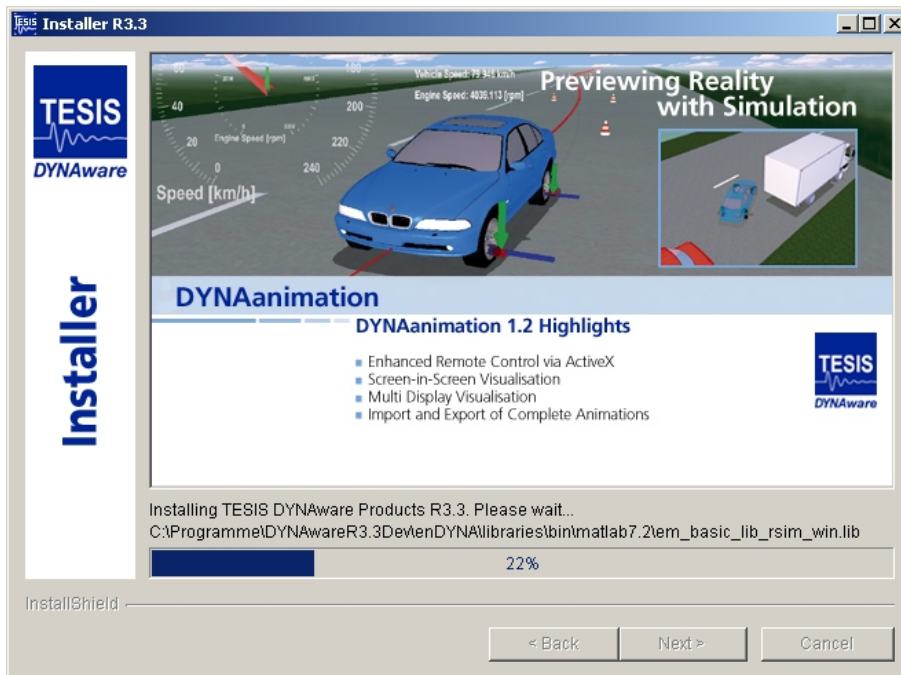


## TESIS DYNAware

## DYNAanimation 1.2

## Installation Manual



© 2006 TESIS DYNAware Technische Simulation Dynamischer Systeme GmbH. All rights reserved.

This document and the described software are protected by copyright and license agreement. All rights are reserved. Neither the documentation nor software may be copied in any form, in whole or in part, without prior written consent of TESIS DYNAware Technische Simulation Dynamischer Systeme GmbH.

This Publication and the contents hereof are subject to change without notice. TESIS DYNAware Technische Simulation Dynamischer Systeme GmbH makes no warranty of any kind with regard to this publication, including but not limited to the implied warranties of merchantability or fitness for a particular purpose or correctness of information.

TESIS DYNAware Technische Simulation Dynamischer Systeme GmbH shall not be liable for errors contained herein or direct, indirect, special, incidental, or consequential damages in connection with the furnishing, performance, or use of this publication.

Brand names or product names are trademarks or registered trademarks of their respective companies or organizations.

**TESIS DYNAware**  
**Technische Simulation Dynamischer Systeme GmbH**

Baierbrunner Straße 15

D-81379 Munich

Germany

Telephone: +49 89 74 73 77-0

Telefax: +49 89 74 73 77-99

E-mail: [info@tesis.de](mailto:info@tesis.de)

Web: [www.tesis.de/dynaware](http://www.tesis.de/dynaware)

---

# Contents

<b>1</b>	<b>Installation Guide</b>	<b>4</b>
1.1	System Requirements . . . . .	4
1.2	Licensing . . . . .	4
1.3	Installation . . . . .	4
1.4	Configuration . . . . .	5
1.5	Starting the Software . . . . .	7
1.6	Deinstallation . . . . .	7

---

# 1 Installation Guide

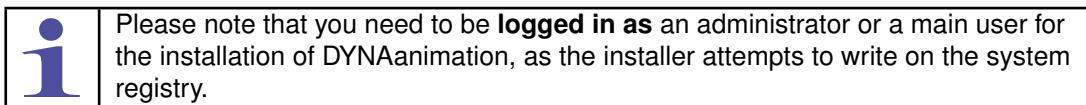
This installation guide describes the installation and configuration of the stand-alone versions of DYNAanimation.

If DYNAanimation is integrated in veDYNA no further action is necessary, as the veDYNA installation and configuration settings comprise those of DYNAanimation.

## 1.1 System Requirements

For installing DYNAanimation please check the following:

- **Minimum System:**  
Pentium 4, 2 GHz or higher, RAM  $\geq$  768 MB, High Performance graphics accelerator card, Open-GL compliant with 32MB RAM (for DYNAanimation)
- **Recommended System:**  
Workstation with Pentium 4, 3 GHz or higher, or Core Duo T2500 (2GHz) or higher, RAM  $\geq$  1 GB, High Performance graphics accelerator card, Open-GL compliant with 128MB RAM (for DYNAanimation)
- Operating systems Windows 2000, XP.
- Please make sure that DirectX 9 or higher is installed on your operating system.
- **Administrator or main user rights** are mandatory.
- MATLAB must be installed on your computer. **MATLAB versions 6.5 (R13), 6.5.1 (R13.1), 7.0 (R14SP1-2), 7.1 (R14SP3), 7.2 (R2006a+)** are supported.
- The installation requires the **Java virtual machine** to run with. If you do not have it installed, get the installation containing the JVM.



## 1.2 Licensing

A license file (`license_dynaware.ini`) is required for each workstation where DYNAanimation is intended to be run (except the DYNAanimation Viewer). The license files have been sent to you by email after completion of the download form or the purchase form.

## 1.3 Installation

Execute the file `setupwin32.exe` (or `setupwin32_nojvm.exe`, if you have the Java Virtual Machine installed). The Installation assistant is activated, and the installation dialog window opens. After having confirmed the

license agreement and selected the installation directory, the installation assistant will copy the files to the indicated directory and create an entry in the Windows Start Menu.

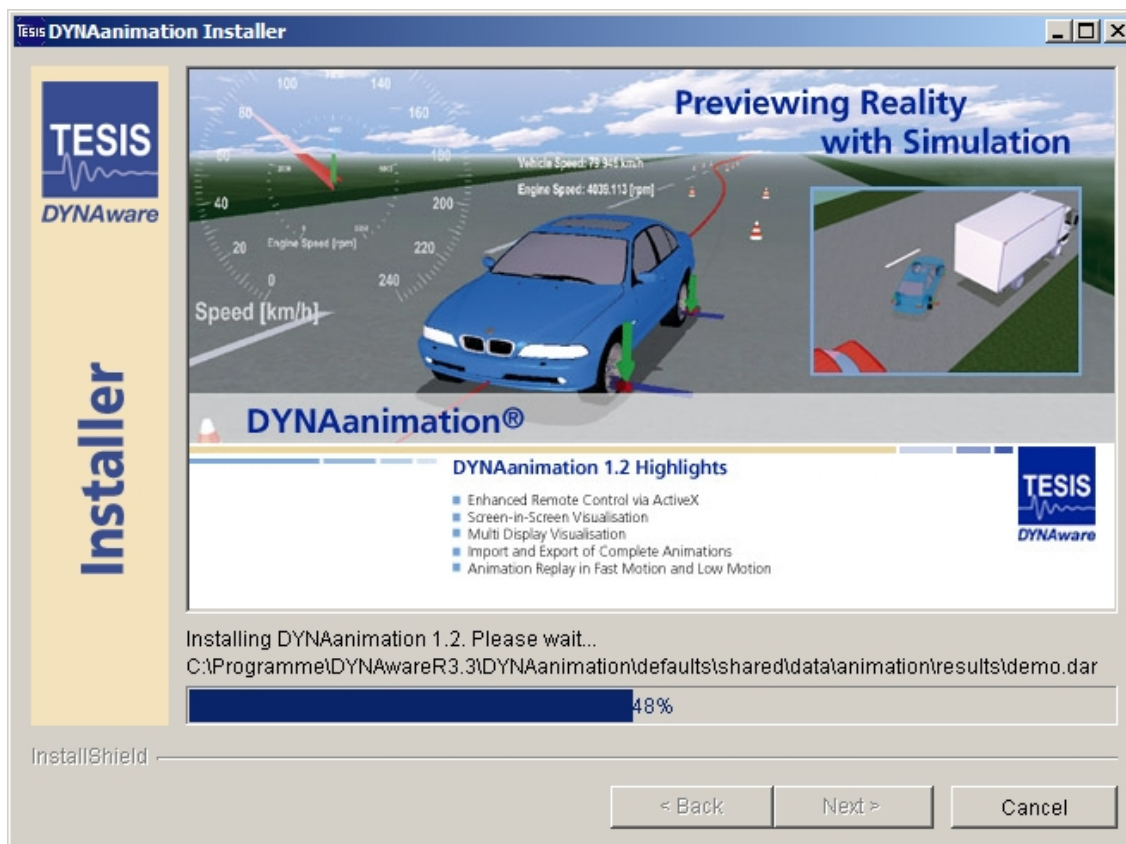


FIGURE 1.1: Installation Dialog

## 1.4 Configuration

After installation, the software needs to be configured. For this purpose start DYNAanimation from the Windows Start Menu. The installation has created the following entry in the Windows Start menu:

**Programs | TESIS DYNAaware R3.3 | Start DYNAanimation 1.2**

On activating this item a file dialog as shown in the following figure will appear. First it will ask for the location and name of the license file. Browse through your system and select the license file. Click  to confirm.

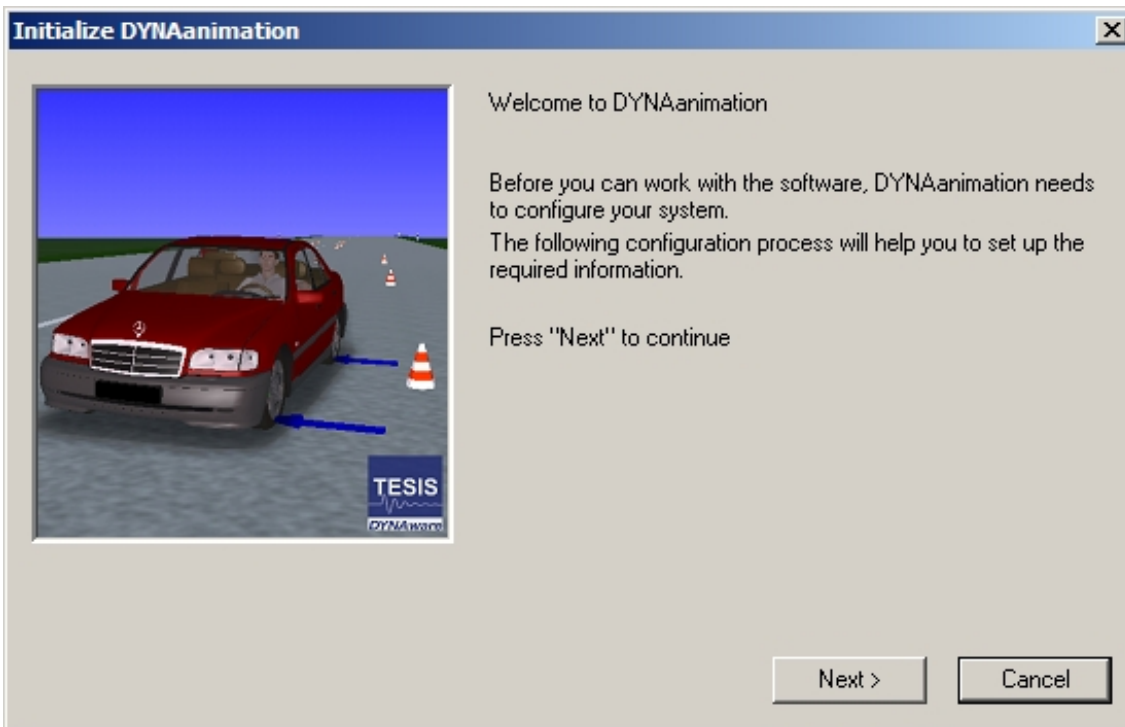


FIGURE 1.2: DYNAanimation Configurator

The second step is to set the work directory containing user data. A file dialog will appear on pressing the **SELECT** button in the configuration dialog:

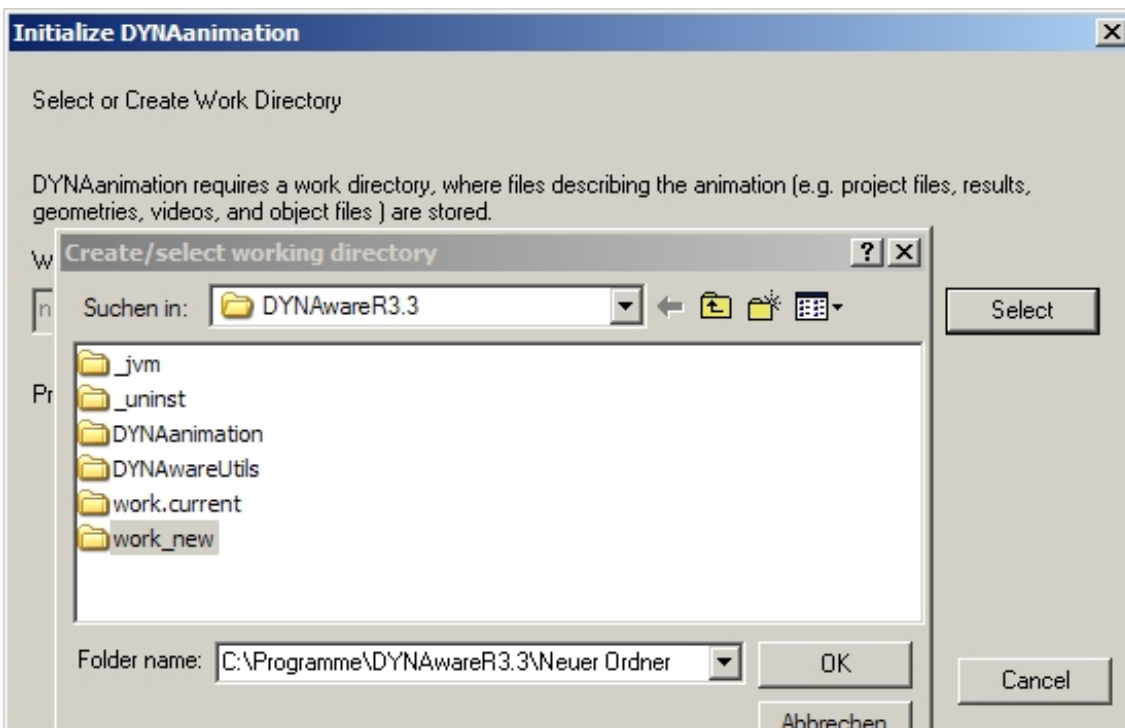


FIGURE 1.3: File Dialog for Setting the Work Directory

To set the work directory, either create a new folder in the file dialog or select an existing directory. In case of a new folder, rename the folder, e.g. to `work.current` as in this example and double click the **OK** button.



Please note that only DYNAanimation was started, without MATLAB. To run a simulation and generate simulation results to be animated you need a MATLAB environment.

To start MATLAB, activate the option **Simulation | Start Matlab**

## 1.5 Starting the Software

Select **Programs | TESIS DYNAware R3.3 | Start DYNAanimation 1.2** in the Windows start menu. DYNAanimation will start up (without Matlab). In addition you need to start MATLAB. This can be done by activating the option **Simulation | Start Matlab**.

## 1.6 Deinstallation

If you wish to remove DYNAanimation from your computer, start the program `uninstaller.exe`, which has been installed in the directory `_uninst` under your installation directory.

## **Imprint**

**TESIS DYNAware**  
**Technische Simulation Dynamischer Systeme GmbH**

Documentation

Baierbrunner Straße 15

D-81379 Munich

Germany

Telephone: +49 89 74 73 77-0

Telefax: +49 89 74 73 77-99

E-mail: [info@tesis.de](mailto:info@tesis.de)

Web: [www.tesis.de/dynaware](http://www.tesis.de/dynaware)

